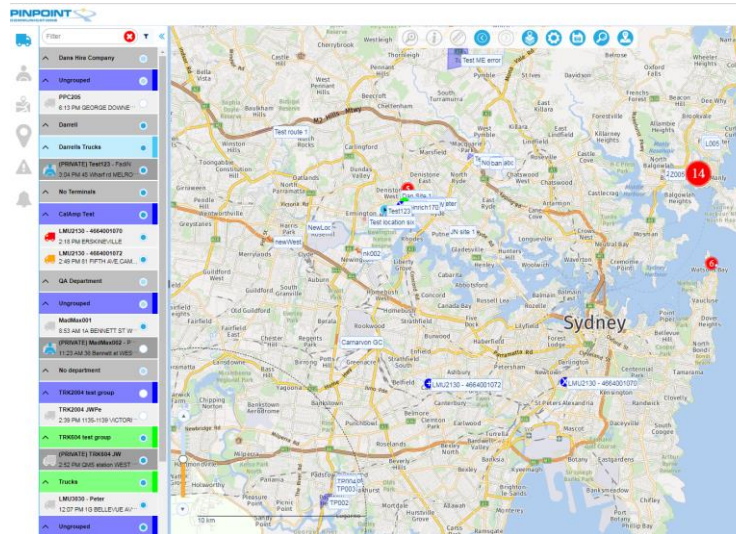


Web AVM 4 – short release update 27th May 2018



AVM 4 Release Update May 2018

Summary of AVM 4 improvements for release

AVM Feature	Summary
Tree Filter for Locations.	Now when you use the filter option on locations on the main page a Green Tick will appear next to the Filter Icon so you know there is a filter in place.
Location Points Position Change	You now have the ability to move a location point on the map.
Suppression of Alarms / Alerts	Alerts and or Alarms can be removed from view for users who do not need to know about them.
Clustering Option	Clustering of Vehicles and Locations can now be turned on and off from the Main Page.
Speed Report Multi and Individual	Thresholds for speed can now be done during the creation of the report and are either Km/h over or % of speed over.
Stop Summery Report	Reports on frequency of stops. When, where and how long a vehicle has stopped during a given time frame.
Over All Performance Improvement	Improved loading time of the vehicle tree for large fleets.

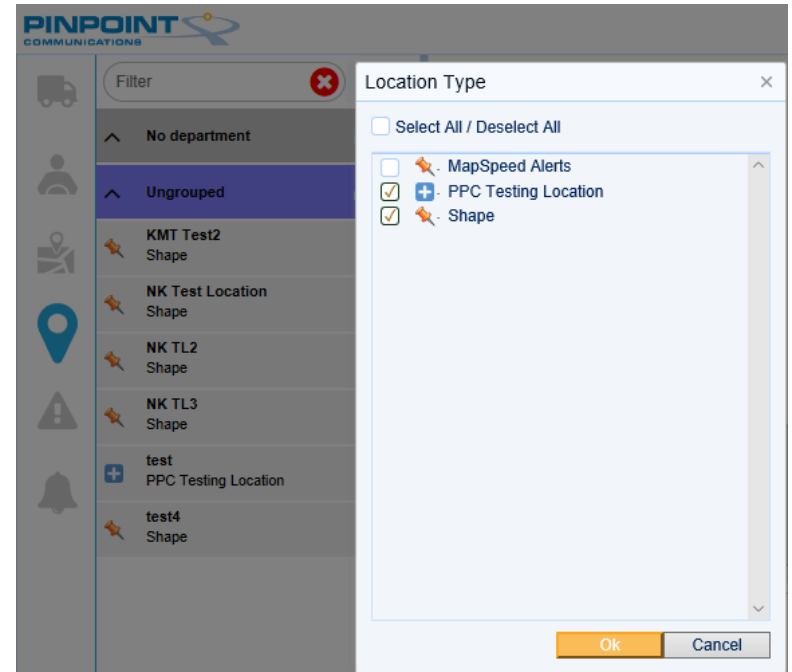
AVM 4 Release Update May 2018

Tree Filter for Location

When a filter is active a **Green** Tick will appear next to the filter icon.

On the main page > **left click** Filter Icon > **select or deselect a location Type.**

There is now a **Green** Tick visible.

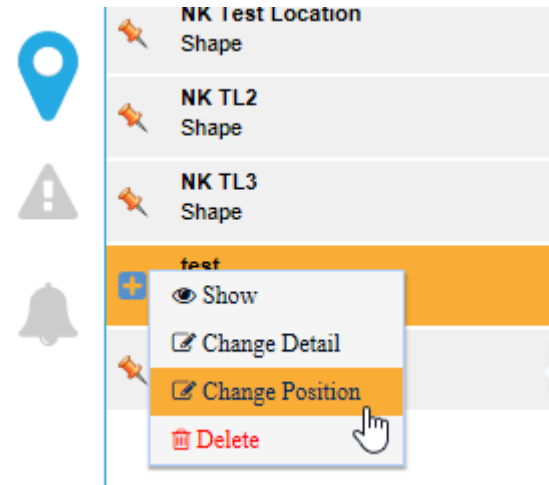


AVM 4 Release Update May 2018

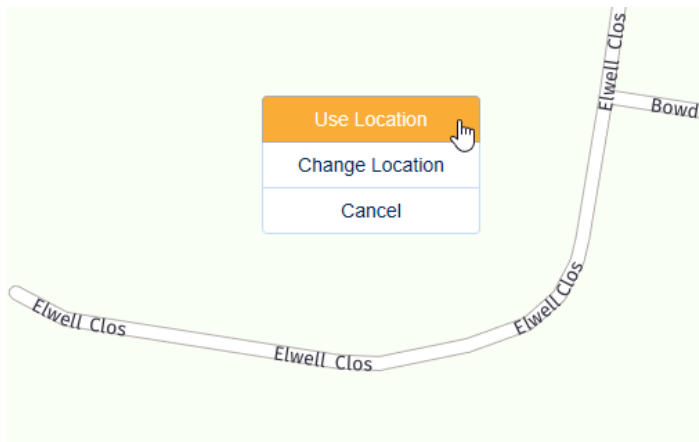
Location Points Changed Position

You now have the ability to move a location point on the map.

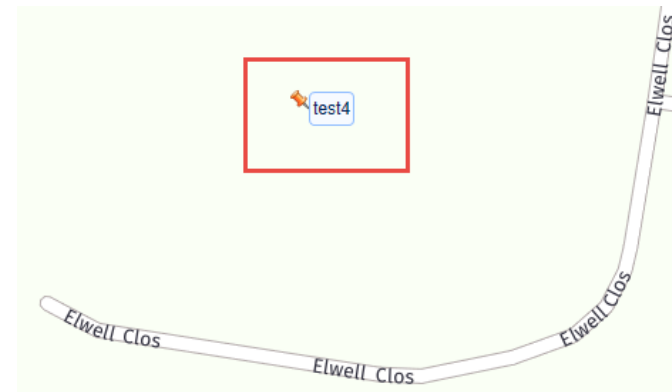
On the main page > **left click** Location Icon > **select the location you want to change** > left click **Change Position**.



Click on the location on the map you want the location to move to and select “Use Location”



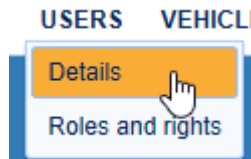
Your Location is now in the new spot on the map.



Suppression of Alarms/Alerts

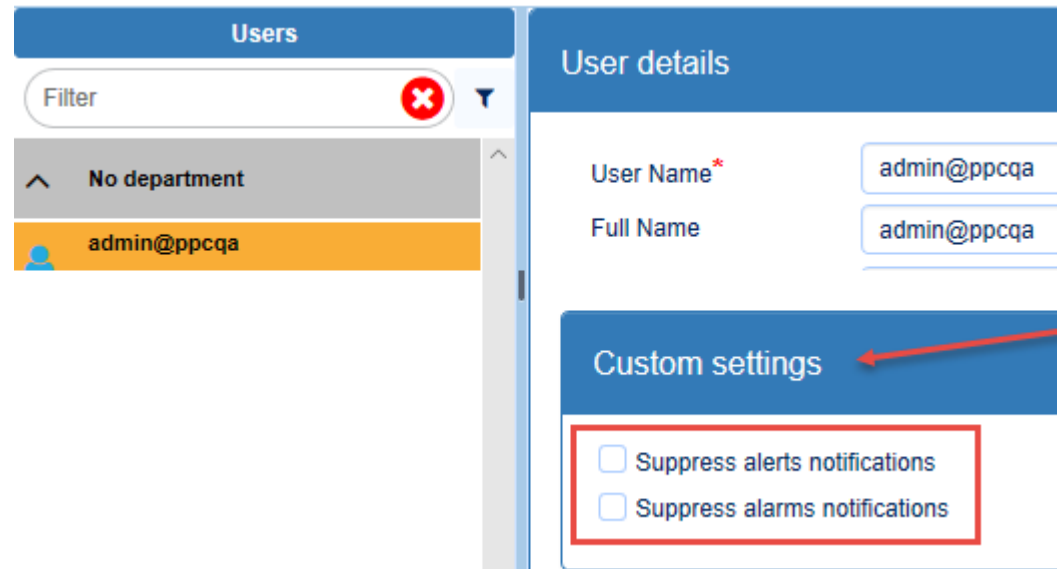
Alerts and or Alarms can be removed from view for users who do not need to know about them.

From the main page > Open the **Manage Page** > Select **Users** > **Details** >



Left Click the User for the change, on the bottom of the page is now and area called **“Custom settings”**

Here you can check the boxes to suppress Alerts and or Alarms.



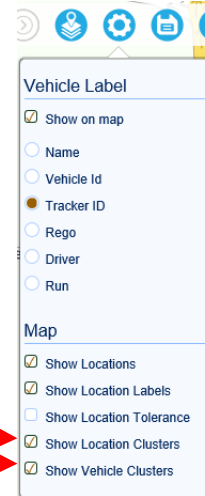
AVM 4 Release Update May 2018

Clustering Options

Clustering of Vehicles and Locations can now be turned on and off from the Main Page.

From the main page > Select the **Settings** icon from the menu bar.

Check or uncheck the **Show Location Clusters** and or **Show Vehicle Clusters**



Now when you scroll out, where is a high concentration of Vehicles or Locations a **Cluster Circle** will appear with the number of Vehicles or Locations within the cluster.



AVM 4 Release Update May 2018

Speed Report Multi/Individual Thresholds

Thresholds for speed can now be done during the creation of the report and are either Km/h over or % of speed over.

Goto the **Reports** page > Select **multi or Individual** > **Exceptions** > **Speed**

Individual ▾ Exceptions ▾ Speed

There are now **Additional Parameters** at the bottom of the page where you can select the speed thresholds you would like to report on.

ADDITIONAL PARAMETERS

Select speed limit	Speed limit threshold
<input type="radio"/> 70 Km/h	<input checked="" type="radio"/> 0 %
<input checked="" type="radio"/> Posted road speed limit	<input type="radio"/> 5 Km/h

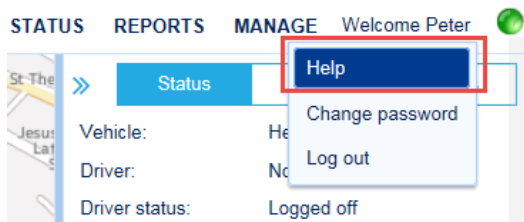
SCHEDULE

In this example only when the vehicle exceeds the posted speed limit by 5 it will be reported on.

Web AVM 4 - Training and Support

Training can be provided initially by your Account Manager, along with support from the Pinpoint team anytime by calling 1300 728 882.

For group training and specific requirements email training@pinpointcomms.com.au and our Training Manager will contact directly to arrange a suitable time for training.



Help link: there is a help link available on every page of Web AVM 4 for online support.



Pinpoint customer user guides can be found online by visiting the below link:

Web AVM 4 – <http://www.pinpointcomms.com.au/training/online-learning>

27th May release note:

This release will also include a variety of bug fixes and improvements to the existing features of Web 4



If you are experiencing issues logging into Web AVM 4 after the minor release outage, please contact your Account Manager or Pinpoint Support on 1300 728 882.